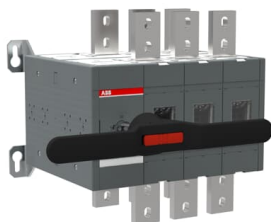




 PRODUCT-DETAILS

OT1600E03CP

OT1600E03CP CHANGE-OVER SWITCH



General Information

Extended Product Type	OT1600E03CP
Product ID	1SCA022872R1840
EAN	6417019339009
Catalog Description	OT1600E03CP CHANGE-OVER SWITCH
Long Description	1600A, 3 pole manual change-over switch including a black plastic IP65 I-0-II pistol type handle (see the table below), shaft and bolt set for the cable connection. Handle padlockable in the 0-position, door interlock in the I- and II- positions and when padlocked.

Circular Value

Environmental Information	1SCC303050D0201
---------------------------	-----------------

Material Compliance

Conflict Minerals Reporting Template	9AKK108467A5658
--------------------------------------	-----------------

(CMRT)

REACH Declaration	1SCC011021D0201
RoHS Information	1SCC011020D0201
RoHS Status	Following EU Directive 2011/65/EU and Amendment 2015/863 July 22, 2019

Ordering

Minimum Order Quantity	1 piece
Customs Tariff Number	85365080
Country of Origin	Finland (FI)

Popular Downloads

Data Sheet, Technical Information	1SCC303003C0201
Instructions and Manuals	1SCC303008M0208

Dimensions

Product Net Width	400 mm 15.75 in
Product Net Height	372 mm 14.65 in
Product Net Depth / Length	309 mm 12.17 in
Product Net Weight	38.22 kg 84.26 lb

Technical

Rated Operational Current AC-21A (I_e)	(380 ... 415 V) 1600 A (500 V) 1600 A (690 V) 1600 A
Rated Operational Current AC-22A (I_e)	(380 ... 415 V) 1600 A (500 V) 1600 A (690 V) 1600 A
Rated Operational Current AC-23A (I_e)	(380 ... 415 V) 1600 A (500 V) 1600 A (690 V) 1600 A
Rated Operational Current AC-31B (I_e)	(380 ... 415 V) 1600 A
Rated Operational Current AC-33B (I_e)	(380 ... 415 V) 1600 A
Rated Operational Power AC-23A (P_e)	(380 ... 415 V) 710 kW (500 V) 900 kW (690 V) 1200 kW
Conventional Free-air Thermal Current (I_{th})	$\Theta = 40\text{ °C}$ 1600 A
Rated Impulse Withstand Voltage (U_{imp})	12 kV
Rated Insulation Voltage (U_i)	1000 V
Rated Operational Voltage	1000 V
Rated Short-time	for 1 s 50 kiloampere rms

Withstand Current Low Voltage (I_{cw})	
Power Loss	48 W
Pollution Degree	3
Handle Color	Black
Handle Type	Handle and shaft included
Switches Operating Mechanism	Mechanism at the End of the Switch 03 (Left Side)
Distance Between Phases	Standard
Position of Line Terminals	Top In - Bottom Out, Bottom In - Top Out
Operating Mode	Front operated
Mounting Type	Base mounting
Number of Poles	3
Degree of Protection	Front IP20
Terminal Width	50 mm
Tightening Torque	acc. IEC 60947-1 50 ... 75 N·m
Transition Type	Open

Technical UL/CSA

Ampere Rating	1600 A
Tightening Torque	acc. IEC 60947-1 50 ... 75 N·m

Environmental

Environmental Information	1SCC303050D0201
---------------------------	-----------------

Certificates and Declarations

Declaration of Conformity - CE	1SCC303015D2702
DNV Certificate	1SCC303138D0201

Container Information

Package Level 1 Units	1 piece
Package Level 1 Width	394 mm 15.51 in
Package Level 1 Depth / Length	534 mm 21.02 in
Package Level 1 Height	368 mm 14.49 in
Package Level 1 Gross Weight	40.32 kg 88.89 lb
Package Level 1 EAN	6417019339009

Classifications

Object Classification Code	Q
ETIM 8	EC000216 - Switch disconnecter

ETIM 9	EC000216 - Switch disconnector (low voltage)
UNSPSC	39122233
IDEA Granular Category Code (IGCC)	5290 >> Disconnect switch
eClass	V11.1 : 27371403
WEEE Category	5. Small Equipment (No External Dimension More Than 50 cm)
E-Number (Finland)	3600149

Categories

Low Voltage Products and Systems → Switches → Change-over and Transfer Switches → Manual Change-over Switches

